

# SOFTWARE

## DataView® Data Analysis and Reporting Software

### Configure all functions of the Model 6470-B

- ▶ Run tests and analyze real-time data from your PC
- ▶ Configure all test functions and parameters from your PC
- ▶ Customize views, templates and reports to your exact needs
- ▶ Create and store a complete library of configurations that can be used with the Model 6470-B as needed
- ▶ Display Fall-of-Potential plots, tabular listings of test results, resistance vs. frequency plots, soil resistivity and bonding tests
- ▶ Print reports using standard or custom templates you design
- ▶ Free updates are available through our website [www.aemc.com](http://www.aemc.com)



DataView is included with the Model 6470-B.



DataView® software provides a convenient way to configure and control ground resistance tests from your computer. Through the use of clear and easy-to-use tabbed dialog boxes, all of Model 6470-B functions can be configured and tests can be initiated. Results can be displayed in real time and stored in your PC. Reports may be printed along with the operator's comments and analysis.



## DataView®

### Minimum System Requirements:

- ▶ Windows 2000/XP/Vista® operating system
- ▶ 128MB of RAM for Windows 2000 (256MB recommended)
- ▶ 256MB of RAM for Windows XP
- ▶ 512MB of RAM for Windows Vista®
- ▶ 80MB of hard disk space (200MB recommended)
- ▶ CD-ROM drive

Windows is a registered trademark of Microsoft Corporation in the United States and/or other countries.

### Fall-of-Potential Plot

Name of Operator \_\_\_\_\_  
 Location \_\_\_\_\_ Date \_\_\_\_\_  
 Model \_\_\_\_\_ Ground System Type: Single Rod  Rod Depth \_\_\_\_\_ ft  
 Serial # \_\_\_\_\_ Multiple Rods (Grid)  Longest Diagonal Dimension \_\_\_\_\_ ft  
 Z Electrode Distance \_\_\_\_\_ ft

	Voltage Electrode (Y) distance from Ground Rod under Test (X)	Measured Resistance
%	FEET	OHMS
90	180	49.3
	160	34.2
72	144	22.1
70	140	22.1
62	124	21.8
60	120	21.8
52	104	21.6
50	100	21.6
40	80	20.4
30	60	16.2
	40	12.8
	20	9.1
0		

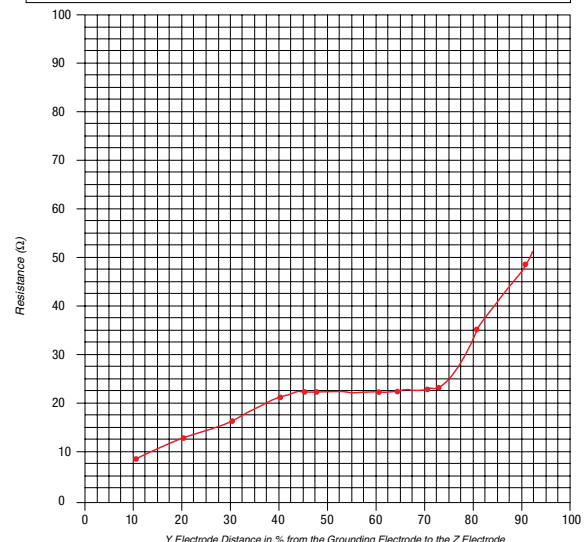
Test Conditions

Temp: \_\_\_\_\_ Soil:  Moist  Dry

Soil Type

Loam  Sand & Gravel  Shale  Clay  Limestone

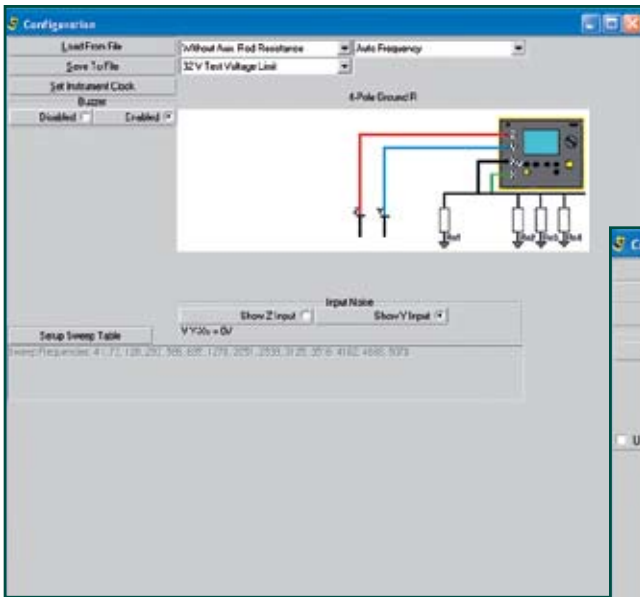
Sandstone  Granite  Slate  Other \_\_\_\_\_



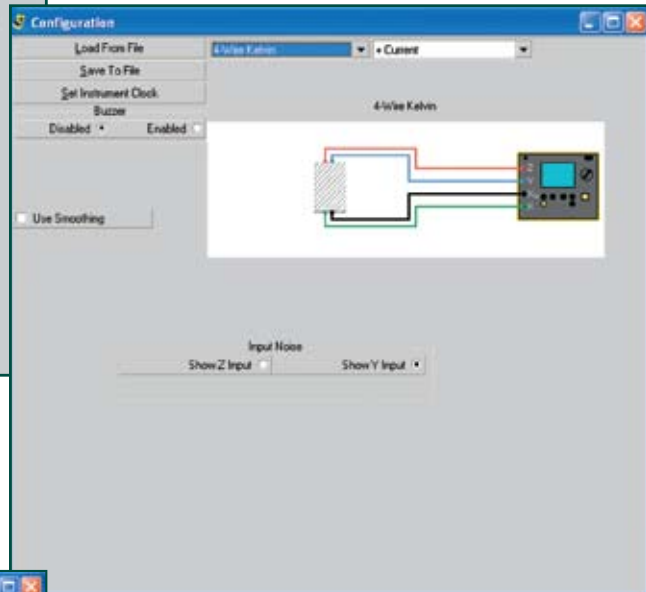
Typical report showing Fall-of-Potential plot using DataView® software.



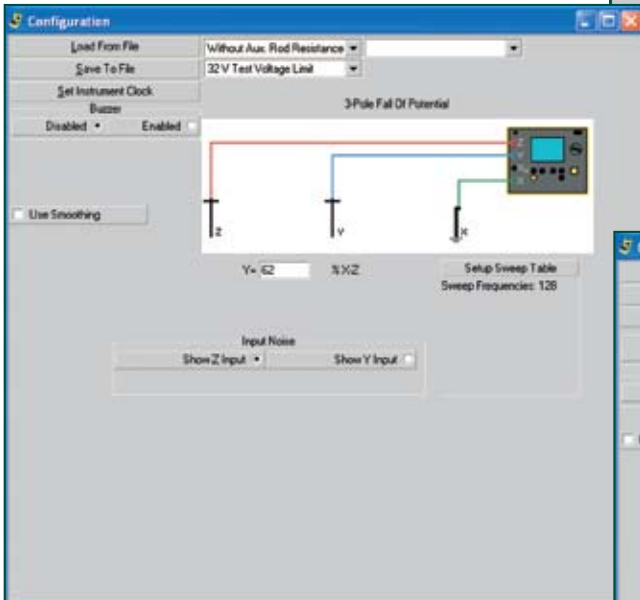
# DATAVIEW<sup>®</sup> FUNCTIONAL DISPLAYS



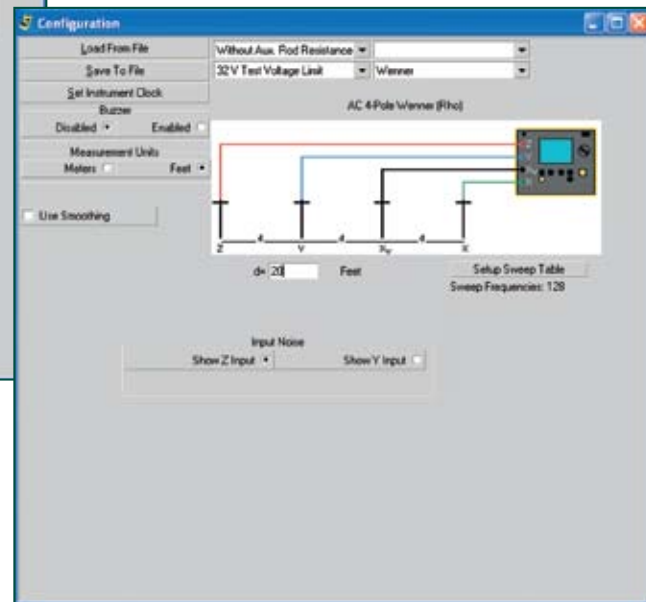
4-Point Fall-of-Potential test setup screen — operator can select test voltage, manually select the test frequency or have the instrument automatically select the best test frequency. Distance for Y electrode can also be entered manually and a Fall-of-Potential plot generated. Lead Compensation is automatically provided in this test mode.



Bond test setup screen — operator can choose two or four wire test method.



3-Point Fall-of-Potential test setup screen — operator can select test voltage, manually select the test frequency or have the instrument automatically select the best test frequency. Distance for Y electrode can also be entered manually and a Fall-of-Potential plot generated.



Soil resistivity test setup screen — operator can select either the Wenner or Schlumberger test method, select test voltage and frequency and program the spacing between electrodes in either feet or meters.