



AEMC Voltage Sentinel™ Loggers



Model SDL V301

- True RMS measurements
- Low-cost, self contained, portable
- Differential three-phase inputs
- Stores up to 480,000 points (1MB)
- 64 samples per cycle
- Includes DataView®Lite software
- USB communication
- 600V Cat. III

SPECIFICATIONS		
MODEL	SDL V301	SDL V302
ELECTRICAL		
Number of Channels	3	4
Input Termination	Recessed Banana Jacks	
Voltage Range	0 to 600V	
Resolution	0.1V	
Accuracy	±(0.25% of Reading + 0.6V) from 85 to 600V ±(1.0% of Reading + 0.6V) from 5 to 85V	
Sample Rate	64 samples/cycle	
Storage Rate	Programmable selection of 1/sec to 1/day	
Recording Method	Stop when full, FIFO, and Extended Recording Mode (XRM™)*	
Memory Capacity	1MB, stores 480,000 readings	
Communication	USB 2.0 optically isolated to 2500Vrms	
Controls	One button to turn logger on/off and start/stop recording	
Indicators	Red, yellow and green status indicators	
MECHANICAL		
Protection Index	IP50	
Power Source	Four 1.5V C Alkaline batteries	Rechargeable NiMH batteries
Dimensions	6.732 x 4.764 x 2.165"	



AEMC Current Sentinel™ Loggers



Model SDL A301

- True RMS measurements
- Low-cost, self contained, portable
- Integral flexible current probes for three-phases
- Measures up to 3000A
- Stores up to 480,000 points (1MB)
- 64 samples per cycle
- Includes DataView®Lite software
- USB communication
- 600V Cat. III

SPECIFICATIONS				
MODEL	SDL A301	SDL A302	SDL A303	SDL A304
ELECTRICAL				
Number of Channels	3			
Input Termination	Hard wired flexible CTs			
Current Range	5 to 1000A TRMS	15 to 3000A TRMS	5 to 1000A TRMS	15 to 3000A TRMS
Resolution	0.25A			
Accuracy	±(1% of Reading + 1.5A)			
Sample Rate	64 samples/cycle			
Storage Rate	Programmable selection of 1/sec to 1/day			
Recording Method	Stop when full, FIFO, and Extended Recording Mode (XRM™)*			
Memory Capacity	1MB, stores 480,000 readings			
Communication	USB 2.0 optically isolated to 2500Vrms			
Controls	One button to turn logger on/off and start/stop recording			
Indicators	Red, yellow and green status indicators			
MECHANICAL				
Protection Index	IP50			
Power Source	Four 1.5V C Alkaline batteries	Rechargeable NiMH batteries		
Dimensions	6.732 x 4.764 x 2.165"			

***Extended Recording Mode (XRM™)**

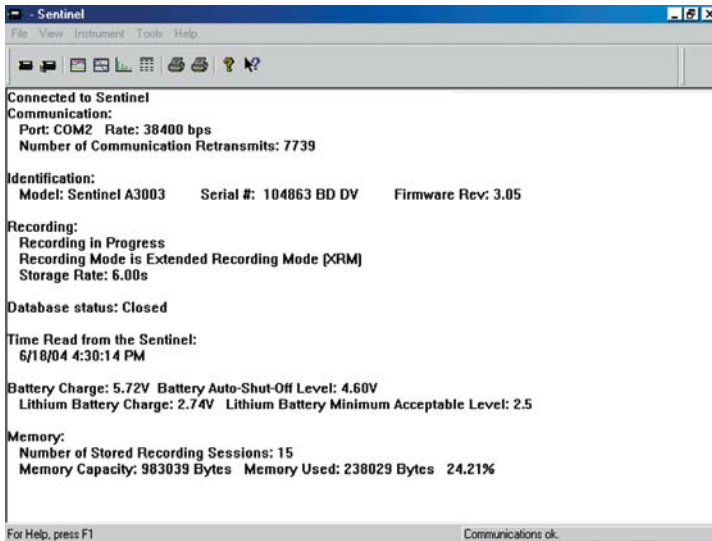
This unique recording mode provides the opportunity to continuously record over long periods of time by reducing the stored sample resolution of the oldest data and maintaining matching resolution for the newest data. Each time the memory fills up using XRM™ every other of the oldest stored samples is discarded making room for newer samples. This process continues until the recording is manually stopped.

ORDERING INFORMATION

2134.10	Sentinel Voltage Logger Model SDL V301 (3-Channel, 600V _{AC})	\$ 695.00
2134.11	Sentinel Voltage Logger Model SDL V302 (4-Channel, 600V _{AC} , Rechargeable NiMH batteries)	\$ 945.00
2134.15	Sentinel Current Logger Model SDL A301 (3-Channel, 1000A)	\$ 1,095.00
2134.16	Sentinel Current Logger Model SDL A302 (3-Channel, 3000A)	\$ 1,295.00
2134.17	Sentinel Current Logger Model SDL A303 (3-Channel, 1000A, Rechargeable NiMH batteries)	\$ 1,245.00
2134.18	Sentinel Current Logger Model SDL A304 (3-Channel, 3000A, Rechargeable NiMH batteries)	\$ 1,445.00

DataView® Software for Sentinel™ Loggers

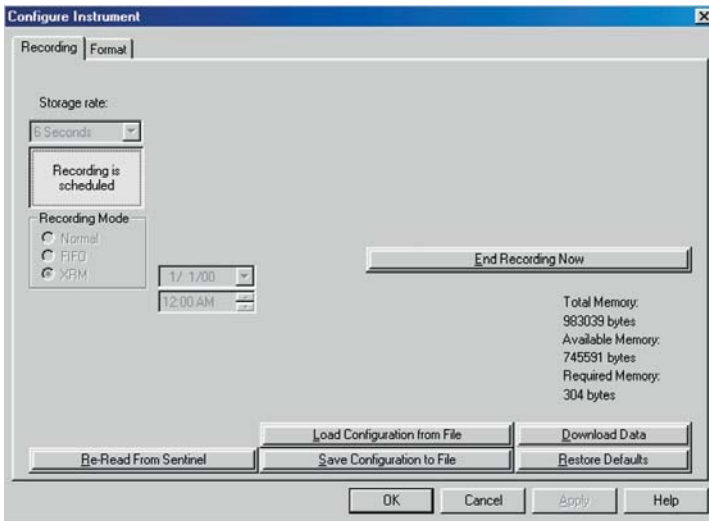
DataView® Lite



DataView® Lite is included with all Sentinel Loggers

Clear and easy-to-read status update when DataView® and Sentinel connect.

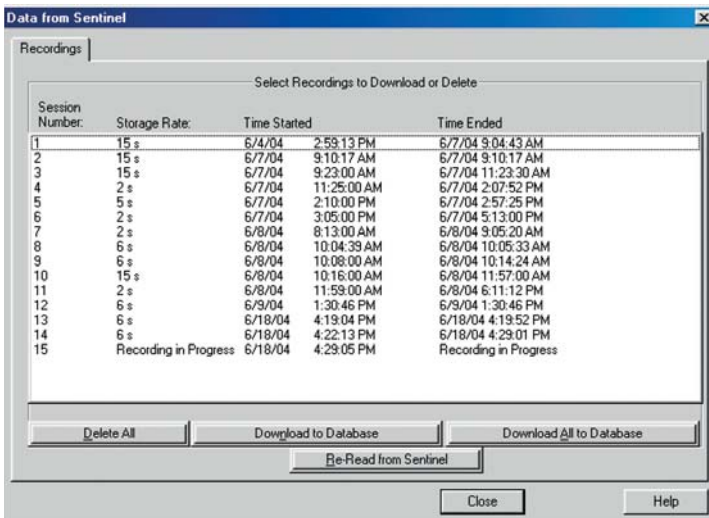
- Display and analyze real time data on your PC
- Configure all data logger functions and parameters from your PC including sample rate, recording length, channel configuration and more
- Create and store a complete library of configurations that can be uploaded to the logger as needed
- Zoom in and out and pan through sections of the graph to analyze the data
- Download, display and analyze recorded data
- Display waveforms, trend graphs and text summaries
- Display surge and sag events in high-resolution waveforms and as tabular listings
- Print reports using standard or custom templates you design



Two tabbed dialog boxes allows for easy setup of all recording functions.

Minimum System Requirements:

- Windows®98/2000/ME/XP or Windows®NT 4.0
- 128MB of RAM (256MB recommended)
 Windows®98/2000/ME or Windows®NT 4.0
 256MB of RAM for Windows®XP
- 35MB of Hard Disk Space (200MB recommended)
- CD Rom drive



Dialog box allows for clear and easy access to all stored data.

